

TOWNHOME

FLEUR

3 BEDROOMS
3 FULL BATHS + 1 HALF BATH

~ 3,477 SQ. FT.
3 PATIOS
2 DECKS

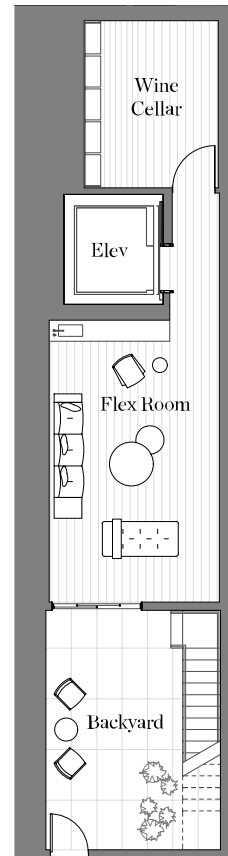
- Wine Cellar with 200+ bottle capacity
- Custom built-in wardrobe system
- Laundry Room



2238 MARKET

2238 Market Street
San Francisco, California 94114

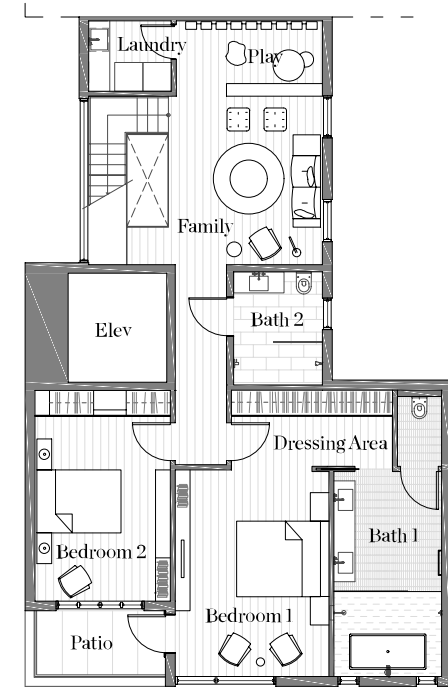
2238Market.com



Level 1



Level 2



Level 3



© 2022, 2238 Market | Floor plans are drawn to varying scales to maximize visibility when printed. The floor plans, elevations, renderings, features, finishes and specifications are subject to change at any time and should not be relied on as representations, express or implied. Square footage or floor areas shown in any marketing or other materials is approximate and may be more or less than the actual size. Real estate consulting, sales and marketing by Polaris Pacific. A licensed California, Arizona, Colorado, Hawaii, Oregon and Washington broker - CA DRE #01499250

