

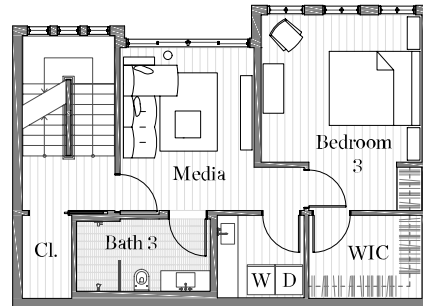
TOWNHOME

# VERTE

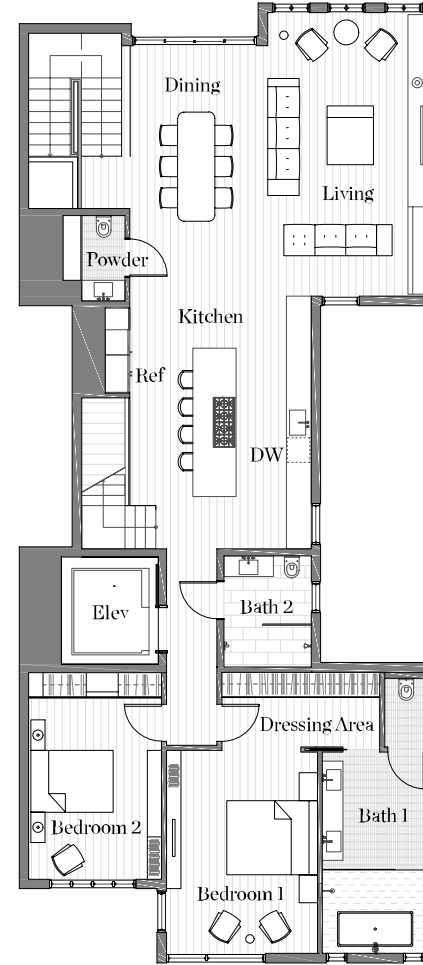
3 BEDROOMS  
3 FULL BATHS + 1 HALF BATH

~ 2,997 SQ.FT.  
~ 580 SQ.FT. ROOF DECK

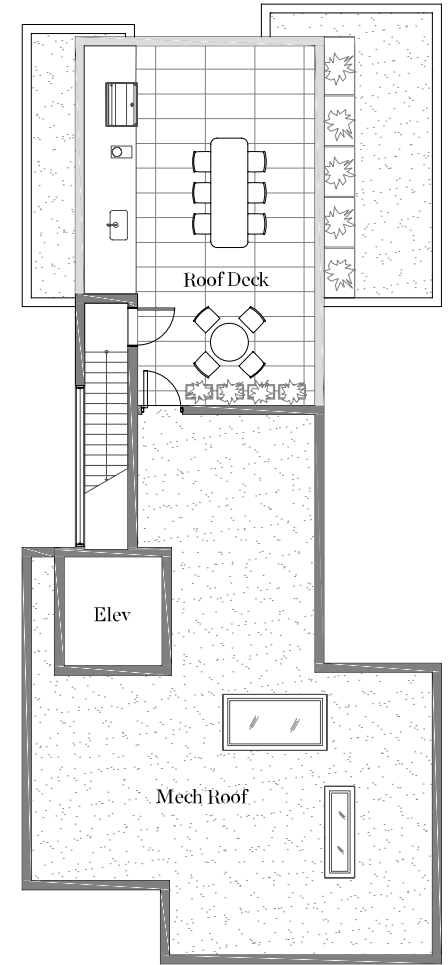
- Rooftop BBQ and wash sink
- Guest Suite
- Laundry Room



Level 1



Level 2



Level 3



2238  
MARKET

2238 Market Street  
San Francisco, California 94114

2238Market.com



vanke PRADO+ GROUP POLARIS PACIFIC

© 2022, 2238 Market | Floor plans are drawn to varying scales to maximize visibility when printed. The floor plans, elevations, renderings, features, finishes and specifications are subject to change at any time and should not be relied on as representations, express or implied. Square footage or floor areas shown in any marketing or other materials is approximate and may be more or less than the actual size. Real estate consulting, sales and marketing by Polaris Pacific. A licensed California, Arizona, Colorado, Hawaii, Oregon and Washington broker - CA DRE #01499250

